



# MD Live by Evernorth target employer profile



62M+  
members

\$2.7B  
in savings

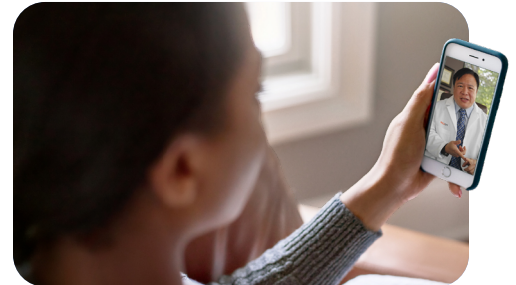
93%  
client retention

74  
NPS Score

We partner with large national and regional employers seeking a strategic, consistent virtual care approach across their benefits ecosystem.

These employers often:

- + Have multiple health insurance carriers.
- + Want one consistent telehealth/virtual care strategy across the board.
- + Are navigating carve-ins/carve-outs and need simplicity and scale.



## General size guidelines<sup>1</sup>

Solutions	Employee Count
+ Urgent Care + Behavioral Health	+ 5,000 employees and above
+ Urgent Care + Behavioral Health + Dermatology and/or VPC	+ 3,500 employees and above

**Note:** For groups outside the above thresholds, contact our team, and we'll pair them with one of our resellers to explore further options.

## Best practices for determining fit

The ideal employer group client should check the following boxes:

- ☒ Employer group or their designated vendor can provide consistent, accurate eligibility information with insurance payer subscriber IDs (If multiple carriers are available).
- ☒ Employer group has a designated benefits portal that can easily link to the MD Live platform; The capability to promote and guide employees to virtual care when appropriate is ideal but not required.
- ☒ Employer stakeholders are open to collaboration with the MD Live team on employee engagement and education campaigns to drive awareness and utilization.



engage@MDLive.com | MDLive.com



<sup>1</sup>These are general benchmarks and may vary depending on plan design and employer goals.

Copyright © 2025 MD Live, an Evernorth company. All Rights Reserved. MD Live Medical Group, PA and other MD Live related professional entities provide the clinical services made available by MD Live. MD Live Medical Group, PA and the other MD Live related professional entities are independent entities. ® MD Live is a registered trademark of MD Live, an Evernorth company, All Rights Reserved. 120-5403-25

**MD Live**  
By EVERNORTH<sup>®</sup>